

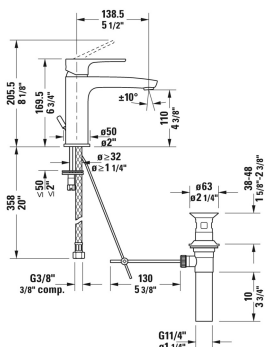
B.1 Single handle lavatory faucet "M" & # B11020001U10

| < 6 3/4" Inch > |



Single handle lavatory faucet "M"	Dimension	Weight	Order number
ceramic cartridge, projection 5 1/2", stainless steel flexible connection hoses 3/8" OD compression, aerator adjustable, normal spray, Chrome finish, max. temperature can be adjusted during installation, recommended operating pressure 43.5 - 72.5 psi, with pop-up and drain assembly, 6 3/4" Inch			
Colors			
10 Chrome			
Variant			
1.1 gal/min (4.0 l/min) flow rate 43.5 psi (3.0 bar), cCSAus listed*			B11020001U10

All drawings contain the necessary measurements which are subject to standard tolerances. They are stated in inch & mm and are non-binding. Exact measurements, in particular for customized installation scenarios, can only be taken from the finished ceramic piece.



B.1 Single handle lavatory faucet "M" & # B11020002U10

| < 6 3/4" Inch > |



Single handle lavatory faucet "M"	Dimension	Weight	Order number
ceramic cartridge, projection 5 1/2", stainless steel flexible connection hoses 3/8" OD compression, aerator adjustable, normal spray, Chrome finish, max. temperature can be adjusted during installation, recommended operating pressure 43.5 - 72.5 psi, less pop-up and drain assembly, 6 3/4" Inch			
Colors			
10 Chrome			
Variants			
1.1 gal/min (4.0 l/min) flow rate 43.5 psi (3.0 bar), cCSAus listed*			B11020002U10

All drawings contain the necessary measurements which are subject to standard tolerances. They are stated in inch & mm and are non-binding. Exact measurements, in particular for customized installation scenarios, can only be taken from the finished ceramic piece.

