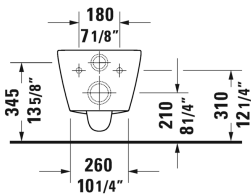
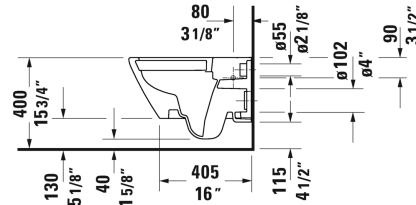
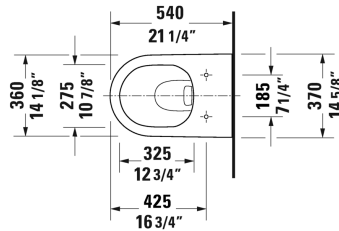


D-Neo Toilet wall-mounted Duravit Rimless® # 257709..92 / 257709..92

| < 14 5/8" Inch > |



| Toilet wall-mounted Duravit Rimless® | Dimension | Weight | Order number |
|--|------------------------|---------|--------------|
| rimless, WaterSense® listed, washdown model, Durafix included, cUPC® listed* | | | |
| Colors | | | |
| 00 White 20 HygieneGlaze (an antibacterial ceramic glaze that provides almost indefinite effectiveness) | | | |
| Variant | | | |
| 1.28/0.8 gpf | 14 5/8" x 21 1/4" Inch | 51.2 lb | 257709..92 |
| 1.28/0.8 gpf | 14 5/8" x 21 1/4" Inch | 51.2 lb | 257709..92 |
| Infobox | | | |
| Wall-mounted toilet is ADA compliant, when installed with a seat height of 17" - 19" from the finished floor, * Complies with following standards: ASME A112.19.2/CSA B45.1 and ASME A112.19.14, In-wall tank & carrier and actuator plate required for installation, Durafix for concealed installation is included | | | |
| Sanitary ceramics with the special WonderGliss surface finish will remain clean and attractive-looking for a long time to come. When ordering WonderGliss please add a "1" as eleventh digit to the model number. | | | |
| Actuator plate A1, for toilet, plastic mechanical actuation, for surface mounted installation, dual flush, mounting frame, mounting hardware included, push rods, front plate plastic | 8 1/2" x 5 3/4" Inch | 0.7 lb | WD5008 |

D-Neo Toilet wall-mounted Duravit Rimless® ♿ # 257709..92 / 257709..92

|< 14 5/8" Inch >|

| | | |
|--|---------------------------------------|--------------------------------|
| <p>Toilet in-wall tank & carrier, Standard WaterSense® listed, For 2"x4" and 2"x6" wall installation, for toilets with a projection of <= 24 5/8", adjustable feet 0" - 9 1/2", SensoWash ready, mechanical front flush actuation, includes in-wall tank, marking of filling height, dual flush, insulated against condensation, Scope of delivery, HDPE wall-mounted toilet connection bend DN 90/90, PE wall-mounted toilet connection set DN 90, wall-mounted mounting rods M12, mounting hardware included, 2 bolt caps, cUPC® listed*, Load capacity = 880 lbs</p> | <p>23 1/4" x 45 1/4" Inch 35.3 lb</p> | <p>WD1022</p> |
| <p>Noise reduction gasket</p> | | <p>Schallschutz-Set 005090</p> |
| <p>Suitable products</p> | | |
| <p>Toilet seat and cover hinges stainless steel, without slow close,</p> | | <p>002161</p> |
| <p>Toilet seat and cover removable, hinges stainless steel, with slow close,</p> | | <p>002169</p> |

All drawings contain the necessary measurements which are subject to standard tolerances. They are stated in inch & mm and are non-binding. Exact measurements, in particular for customized installation scenarios, can only be taken from the finished ceramic piece.