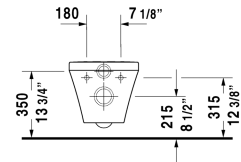
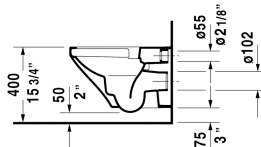
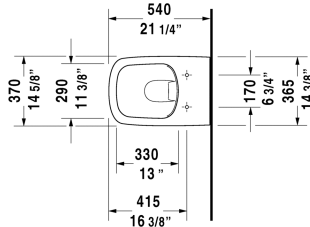



DuraStyle Toilet wall-mounted Duravit Rimless® ♿ #
253809..92 / 253809..92

< 14 5/8" Inch >



Toilet wall-mounted Duravit Rimless®	Dimension	Weight	Order number
rimless, washdown model, cUPC® listed*, WaterSense® listed			
Colors			
00 White 20 HygieneGlaze (an antibacterial ceramic glaze that provides almost indefinite effectiveness)			
Variant			
♣ 1.6/0.8 gpf	14 5/8" x 21 1/4" Inch	56 lb	253809..92
♣ 1.6/0.8 gpf	14 5/8" x 21 1/4" Inch	56 lb	253809..92
Infobox			
* Complies with following standards: ASME A112.19.2/CSA B45.1 and ASME A112.19.14, Wall-mounted toilet is ADA compliant, when installed with a seat height of 17" - 19" from the finished floor, In-wall tank & carrier and actuator plate required for installation			
Sanitary ceramics with the special WonderGliss surface finish will remain clean and attractive-looking for a long time to come. When ordering WonderGliss please add a "1" as eleventh digit to the model number.			
Noise reduction gasket for wall-mounted toilet		0.7 lb	005064
Actuator plate A1, for toilet, plastic mechanical actuation, for surface mounted installation, dual flush, mounting frame, mounting hardware included, push rods, front plate plastic	8 1/2" x 5 3/4" Inch	0.7 lb	WD5008
Toilet in-wall tank & carrier, Standard WaterSense® listed, For 2"x4" and 2"x6" wall installation, for toilets with a projection of <= 24 5/8", adjustable feet 0" - 9 1/2", SensoWash ready, mechanical front flush actuation, includes in-wall tank, marking of filling height, dual flush, insulated against condensation, Scope of delivery, HDPE wall-mounted toilet connection bend DN 90/90, PE wall-mounted toilet connection set DN 90, wall-mounted mounting rods M12, mounting hardware included, 2 bolt caps, cUPC® listed*, Load capacity = 880 lbs	23 1/4" x 45 1/4" Inch	35.3 lb	WD1022
Suitable products			
Toilet seat and cover hinges stainless steel, without slow close,			006371

DuraStyle Toilet wall-mounted Duravit Rimless®  #
253809..92 / 253809..92

|< 14 5/8" Inch >|

Toilet seat and cover hinges stainless steel, removable, with
slow close,

006379

All drawings contain the necessary measurements which are subject to standard tolerances. They are stated in inch & mm and are non-binding. Exact measurements, in particular for customized installation scenarios, can only be taken from the finished ceramic piece.