

23 085

BAULOOP®

SINGLE HOLE SINGLE-HANDLE S-SIZE BATHROOM FAUCET 1.2 GPM LESS DRAIN

Pure Freude
an Wasser




STANDARD SPECIFICATION:

- GROHE LongLife
- GROHE StarLight®
- GROHE Zero isolated inner waterways - lead and nickel free
- GROHE EcoJoy®
- 6 15/16" Faucet height (open position)
- 5 13/16" Faucet height (closed position)
- 3 3/4" Spout reach
- 3 3/8" Aerator height
- Quick installation system
- Nylon braided flex hoses
- CALGreen/CEC compliant
- 1.2gpm (4.56 L/min)
- Vessel sink pop-up drain (65 818) sold separately
- Grid drain (28 951) sold separately



PRODUCT FEATURES:

-  GROHE StarLight®
-  GROHE EcoJoy™

CERTIFICATIONS:



- ADA
- WaterSense
- CEC Certified
- Low Lead Certified
- CALGreen Compliant
- Massachusetts Plumbing Board Approved
- Energy Policy Act of 1992
- NSF 61
- NSF 372
- CSA B125.1
- ASME A112.18.1
- Complies with lead plumbing laws

AVAILABLE FINISHES:

23085001



GROHE StarLight®
Chrome

NOTE: Install this product according to the installation guide. ADA, CSA compliant when installed to the specific requirements of these regulations.

Tel: 1.630.582.7711 Fax: 1.630.582.7722

We reserve the right to make revisions without notice to product specifications.

For the most current Specification Sheet, go to www.grohe.us.

02-10-2021

PART OF **LIXIL**

23 085

BAULOOP®

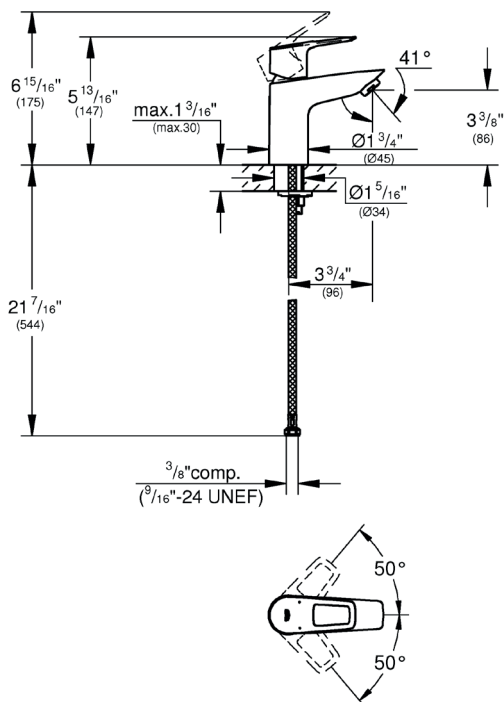
SINGLE HOLE SINGLE-HANDLE S-SIZE BATHROOM FAUCET 1.2 GPM LESS DRAIN

Pure Freude
an Wasser



TECHNICAL DATA:

Product Height	5-13/16 in
Product Width	1-3/4 in
Fitting Spout Height	3-3/8 in
Fitting Spout Reach	3-3/4 in
Fitting Handle Height	5-13/16 in
GPM (Min)-GPM (Max)	1.2 GPM



23 084

BAULOOP®

SINGLE HOLE SINGLE-HANDLE S-SIZE
BATHROOM FAUCET 1.2 GPM

Pure Freude
an Wasser





STANDARD SPECIFICATION:

- GROHE LongLife
- GROHE StarLight®
- GROHE Zero isolated inner waterways - lead and nickel free
- GROHE EcoJoy®
- 6 7/8" Faucet height (open position)
- 5 13/16" Faucet height (closed position)
- 3 3/4" Spout reach
- 3 3/8" Aerator height
- Quick installation system
- Nylon braided flex hoses
- CALGreen/CEC compliant
- Includes drain assembly
- 1.2gpm (4.56 L/min)



PRODUCT FEATURES:

-  GROHE StarLight®
-  GROHE EcoJoy™

CERTIFICATIONS:



- ADA
- WaterSense
- CEC Certified
- Low Lead Certified
- CALGreen Compliant
- Massachusetts Plumbing Board Approved
- Energy Policy Act of 1992
- NSF 61
- NSF 372
- CSA B125.1
- ASME A112.18.1
- Complies with lead plumbing laws

AVAILABLE FINISHES:

23084001



GROHE StarLight®
Chrome

NOTE: Install this product according to the installation guide. ADA, CSA compliant when installed to the specific requirements of these regulations.

Tel: 1.630.582.7711 Fax: 1.630.582.7722
We reserve the right to make revisions without notice to product specifications.
For the most current Specification Sheet, go to www.grohe.us.
02-10-2021

PART OF **LIXIL**

