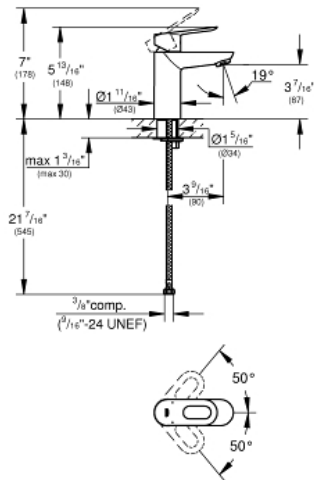


BAULOOP
Single-Handle Bathroom Faucet
MODEL # 23085000

Pure Freude
an Wasser

GROHE



Product Description:
BAULOOP
Single-Handle Bathroom Faucet

- Standard Specification:**
- Single hole installation
 - Metal lever handle
 - 1 1/8" ceramic cartridge
 - Chrome Finish
 - Flow control
 - 6" escutcheon
 - Smooth body
 - Stainless steel flex lines
 - Quick installation system
 - Max Flow Rate: 1.5 gpm (5.7 L/min)

- Applicable Codes & Standards:**
- Energy Policy Act of 1992
 - NSF 61
 - ASME A112.18.1/CSA B125.1
 - US Federal and State material regulations
 - EPA WaterSense®
 - ICC/ANSI A117.1
 - LOGO NSF

Color:
□ 23085000 StarLight Chrome

23 084

BAULOOP®

SINGLE HOLE SINGLE-HANDLE S-SIZE
BATHROOM FAUCET 1.5 GPM

*Pure Freude
an Wasser*



STANDARD SPECIFICATION:

- Single hole installation
- Metal lever
- 1 1/8" ceramic cartridge
- Chrome Finish
- Flow control
- 1 1/4" pop-up waste set
- Stainless steel flex lines
- Quick installation system
- Max Flow Rate: 1.5 gpm (5.7 L/min)



PRODUCT FEATURES:

-  **GROHE StarLight®**
-  **GROHE SilkMove®**
-  **GROHE EcoJoy™**

CERTIFICATIONS:



- ADA
- WaterSense
- Low Lead Certified
- CALGreen Compliant
- Massachusetts Plumbing Board Approved
- Energy Policy Act of 1992
- NSF 61
- CSA B125.1
- ASME A112.18.1
- Complies with lead plumbing laws

AVAILABLE FINISHES:

23084000  GROHE StarLight® Chrome

NOTE: Install this product according to the installation guide. ADA, CSA compliant when installed to the specific requirements of these regulations.

We reserve the right to make revisions without notice to product specifications. 12-06-2021

US
Tel: 1.630.582.7711 Fax: 1.630.582.7722
For the most current Specification Sheet,
go to www.grohe.us.

Canada
Tel: 1.888.644.7643 Fax: 1.905.366.2071
For the most current Specification Sheet,
go to www.grohe.ca.

PART OF LIXIL

23 084

BAULOOP®

SINGLE HOLE SINGLE-HANDLE S-SIZE BATHROOM FAUCET 1.5 GPM

*Pure Freude
an Wasser*



TECHNICAL DATA:

Product Height	5-13/16 in
Product Width	1-11/16 in
Fitting Spout Height	3-7/16 in
Fitting Spout Reach	3-9/16 in
Fitting Handle Height	5-13/16 in
GPM (Min)-GPM (Max)	1.5 gal (US)/min
Fitting No of Holes Required	1

