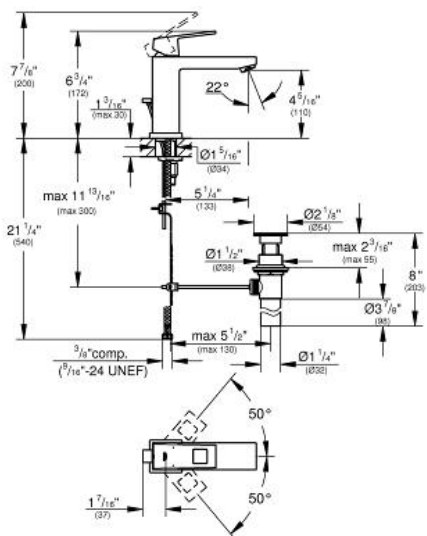


# EUROCUBE Single-Handle Bathroom Faucet M-Size

MODEL # 23670000

Pure Freude  
an Wasser



**Product Description:**  
**EUROCUBE**  
**Single-Handle Bathroom Faucet M-Size**

**Standard Specification:**

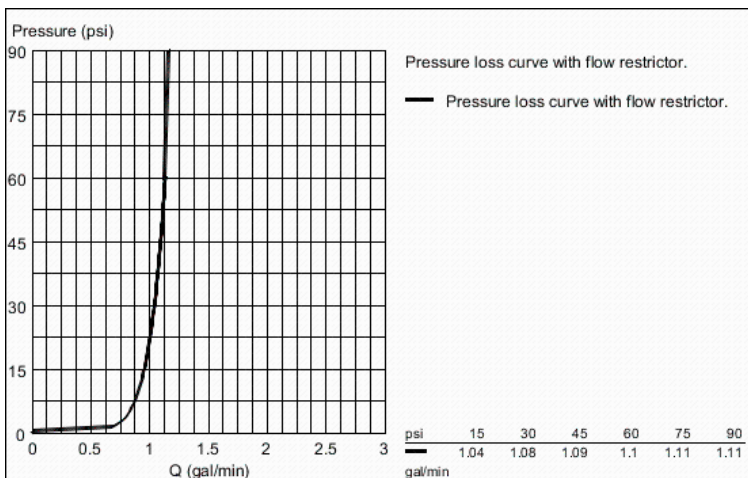
- Single hole installation
- Metal lever handle
- **GROHE SilkMove** 1.1" (28 mm) ceramic cartridge
- With temperature limiter
- **GROHE StarLight** chrome finish
- **GROHE EcoJoy**
- Includes waste-set drain assembly
- Stainless steel flex lines
- **GROHE QuickFix** installation system

**Applicable Codes & Standards:**

- Energy Policy Act of 1992
- NSF 61
- ASME A112.18.1/CSA B125.1
- US Federal and State material regulations
- EPA WaterSense®
- ICC/ANSI A117.1

**Color:**

- 23670000 StarLight Chrome



23 129

## EUROCUBE®

### SINGLE HOLE SINGLE-HANDLE S-SIZE BATHROOM FAUCET 1.2 GPM

Pure Freude  
an Wasser



#### STANDARD SPECIFICATION:

- GROHE SilkMove®
- GROHE StarLight®
- GROHE EcoJoy™
- GROHE QuickFix® installation
- 7 5/16" Faucet height (when in use)
- 4 1/16" Spout reach
- 3 5/8" Aerator height
- Solid brass body
- Single loop handle
- 21 1/2" Nylon braided flex hoses
- CALGreen/CEC compliant
- 1.2gpm (WaterSense)



#### PRODUCT FEATURES:

-  GROHE StarLight®
-  GROHE SilkMove®
-  GROHE EcoJoy™
-  GROHE QuickFix®

#### CERTIFICATIONS:



- ADA
- WaterSense
- CEC Certified
- Low Lead Certified
- CALGreen Compliant
- Massachusetts Plumbing Board Approved
- Energy Policy Act of 1992
- NSF 61
- CSA B125.1
- ASME A112.18.1
- Complies with lead plumbing laws

#### AVAILABLE FINISHES:

2312900A  GROHE StarLight® Chrome

NOTE: Install this product according to the installation guide. ADA, CSA compliant when installed to the specific requirements of these regulations.

We reserve the right to make revisions without notice to product specifications. 12-06-2021

**US**  
Tel: 1.630.582.7711 Fax: 1.630.582.7722  
For the most current Specification Sheet,  
go to [www.grohe.us](http://www.grohe.us).

**Canada**  
Tel: 1.888.644.7643 Fax: 1.905.366.2071  
For the most current Specification Sheet,  
go to [www.grohe.ca](http://www.grohe.ca).

PART OF **LIXIL**

