

35 015

**GROHSAFE™**

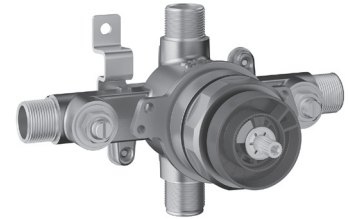
PRESSURE BALANCE ROUGH-IN VALVE

*Pure Freude  
an Wasser*



**STANDARD SPECIFICATION:**

- 1/2" Universal inlets/outlets
- Includes Blue Core one-piece cartridge
- 265° Comfort range
- Reversible cartridge for back to back installation
- Handle limit stop
- Check valves
- Includes plug for 1 outlet installation
- Includes metal support bracket
- Service stops
- Max flow rate (top port) 3.7gpm at 45psi (14L/min), (bottom port) 4.0gpm at 45psi (15L/min)
- Optional Extension Kit (47 996) (sold separately)



**PRODUCT FEATURES:**



**GROHE SilkMove®**

**CERTIFICATIONS:**

- Massachusetts Plumbing Board Approved
- ASSE 1016
- CSA B125.1
- CSA B125.16
- ASME A112.18.1
- ASME A112.1016

**AVAILABLE FINISHES:**

**35015001** No Finish

NOTE: Install this product according to the installation guide. ADA, CSA compliant when installed to the specific requirements of these regulations.

We reserve the right to make revisions without notice to product specifications. 12-14-2021

**US**

Tel: 1.630.582.7711 Fax: 1.630.582.7722  
For the most current Specification Sheet,  
go to [www.grohe.us](http://www.grohe.us).

**Canada**

Tel: 1.888.644.7643 Fax: 1.905.366.2071  
For the most current Specification Sheet,  
go to [www.grohe.ca](http://www.grohe.ca).

**PART OF LIXIL**

35 015

**GROHSAFE™**

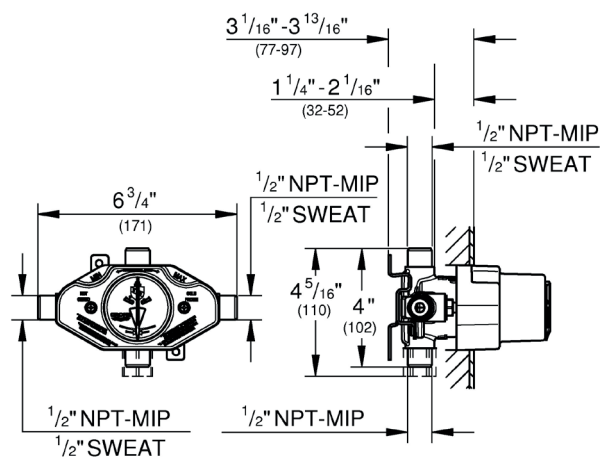
PRESSURE BALANCE ROUGH-IN VALVE

*Pure Freude  
an Wasser*



**TECHNICAL DATA:**

Product Height	4-5/16 in
Product Length	3-13/16 in
Product Width	6-3/4 in
GPM (Min)-GPM (Max)	6.4 GPM

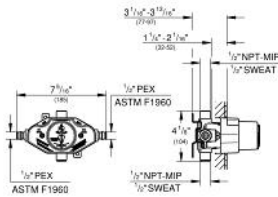


GROHSAFE  
Universal Pressure Balance Rough-  
In valve

MODEL # 35064001

Pure Freude  
an Wasser

GROHE



**Product Description:**  
GROHSAFE  
Universal Pressure Balance Rough-In valve

**Standard Specification:**

- 1/2" PEX cold expansion (ATSM 1960) inlets
- 1/2" Universal outlets
- Includes Blue Core cartridge
- 265° comfort range
- Handle limit stop
- Check valves
- Includes plug for 3-port installation
- Includes metal support bracket
- Universal connection is 1/2" male threads by copper sweat
- Service stops
- Optional extension kit (47 996 000) available
- Max flow rate (top port) 3.7 gpm at 45 psi (14 l/min), (bottom port) 4.0 gpm at 45 psi (15 l/min)

**Applicable Codes & Standards:**

- ASME A112.18.1/CSA B125.1

**Color:**

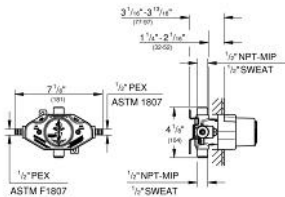
- 35064001 StarLight Chrome

GROHSAFE  
Universal Pressure Balance Rough-  
In valve

MODEL # 35065001

Pure Freude  
an Wasser

GROHE



**Product Description:**  
GROHSAFE  
Universal Pressure Balance Rough-In valve

**Standard Specification:**

- 1/2" PEX crimp/clamp (ATSM 1807) inlets
- 1/2" Universal outlets
- Includes Blue Core cartridge
- 265° comfort range
- Handle limit stop
- Check valves
- Includes plug for 3-port installation
- Includes metal support bracket
- Universal connection is 1/2" male threads by copper sweat
- Service stops
- Optional extension kit (47 996 000) available
- Max flow rate (top port) 3.7 gpm at 45 psi (14 l/min), (bottom port) 4.0 gpm at 45 psi (15 l/min)

**Applicable Codes & Standards:**

- ASME A112.18.1/CSA B125.1

**Color:**

- 35065001 StarLight Chrome