

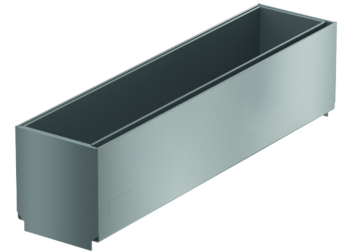
Slotted frame

Product information

ACO Product benefits

- Suitable for Hexaline 2.0, Euroline and Highline in the modular system
- Paving edge
- Free channel cross-section
- Anti-shift device

- Discrete drainage, which fits into the overall look
- Particularly easy handling and installation
- Inspection element enables easy cleaning and maintenance of the channel
- With connector clip for connecting the slotted extension
- You require the lifting aid (Article No.: 415924) for opening the 0.5 m inspection element.



Item Technical Data 415843


Material	Dimensions			Class	Size of the inlet opening [mm]	Inlet cross-section [cm ² /m]
	Length	Width	Height			
	[mm]	[mm]	[mm]			

Inspection element for slot height 105 mm



Stainless steel	500	118	105	Car trafficable	10	92
-----------------	-----	-----	-----	-----------------	----	----

Accessories

Description	Used with	PU [piece]	Item number
 Lift-out tool for inspection elements ■ Material: Galvanised steel	■ 0.5 m inspection elements	1	415924

You can find further accessories under → <http://catalogue.buildingmaterial.aco/acc415843>