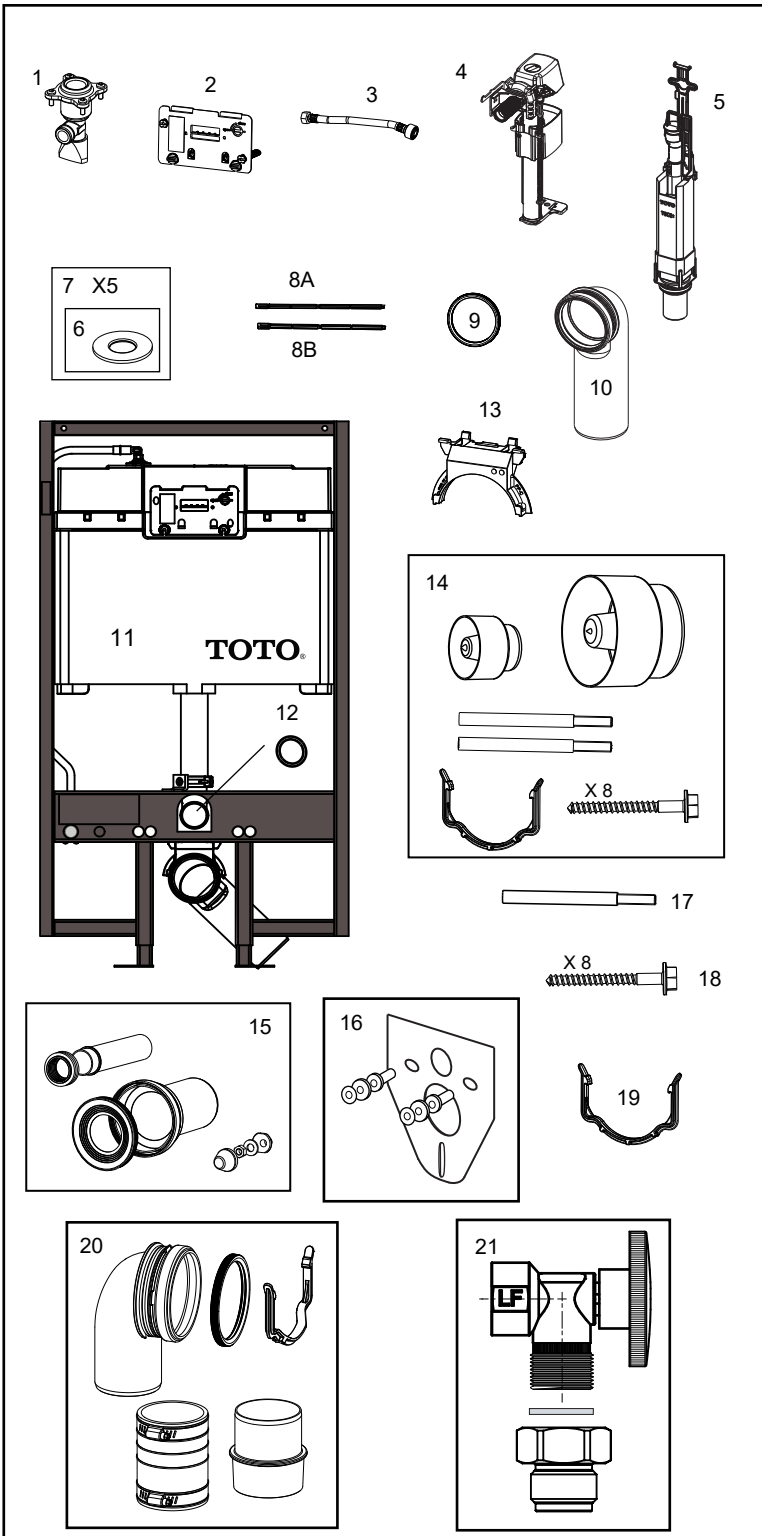


For 2x6 & 2x4 Wall Stud Installation Dual-Max®, 1.6 gpf (6.0 Lpf) & 0.9 gpf (3.4 Lpf), Adjustable Height 15" - 19"



Item	Part Number	Description
1	THU329	Stop Valve
2	THU862-A	Splash Guard/Actuator Kit
3	THU323	Fill Valve Hose (Braided Nylon)
	THU294	Fill Valve Hose (Stainless Steel)
4	THU134	Fill Valve Assembly w/ Bracket & Filter
5	THU322-A	Flush Valve Assembly w/ Hold Down Bracket
6	9BU076-A	Seal Gasket for Flush Valve (1 piece)
7	THU367	Seal Gasket for Flush Valve (5 pieces)
8A	9AU283	Red Push Rod (Partial Flush)
8B	9AU270	Blue Push Rod (Full Flush)
9	9BU086	Gasket for Outlet Pipe Elbow
10	THU327	Outlet Pipe Elbow for 2x6 wall - HDPE
	THU335	Outlet Pipe Elbow for 2x6 wall - Cast Iron
11	THU313	HD Plastic Tank w/ O-Ring & Foam
12	9BU087	O-Ring for Inlet Pipe
13	9AU282	Bracket for Outlet Pipe Elbow
14	THU320	Mounting Hardware Parts Bag
15	THU334#01	Toilet Connection Assembly Parts
16	THU316	Cushion Pad Set
17	6BU033	Threaded Rod Screw M12 x 180
18	6BU035	Lag Screws (x8)
19	9AU273	Lower Bracket - Outlet Pipe Elbow
20	THU343	2x4 Outlet Drain Kit
21	THU468	Washlet Connection Kit

Actual Product may vary slightly from illustration.

Note: