

### IMPORTANT

The following installation instructions must be followed for warranty purposes and for optimal performance. Hourwall does not install panels or have control over the installation of the panels, therefore these Installation Instructions are to be used as guidelines. Hourwall URBANCONCRETE panels are for inside (interior) use only.

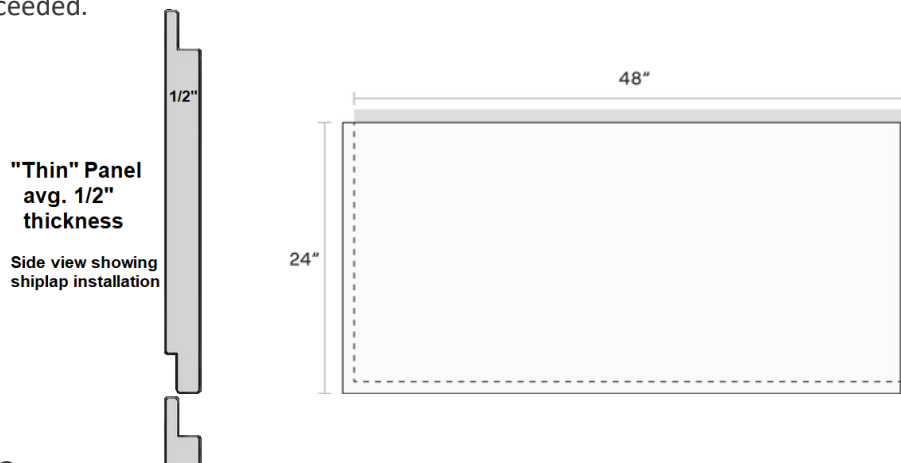
It is the responsibility of the installer to ensure all Hourwall products are installed in accordance with the URBANCONCRETE Installation Instructions. InStone assumes no liability for improper installation or personal injury resulting from proper or improper use or installation.

### SAFETY FIRST

The operator of any power tools or other tools should be skilled and familiar with the correct use of each tool. Proper safety gear must always be worn.

### BUILDING CODE

Follow local Building Codes when applying Hourwall. It is the responsibility of the installer to ensure that applicable building codes are met or exceeded.



### PRODUCT COLORING:

Please ensure, wherever possible, that the production dates on all product being installed side-by-side are the same or compatible. This will help ensure consistent coloring. Most of the time product from different dates will match up, but the installer should check this before installing. Also, there is the possibility for a panel to be slightly off-colored in a batch. Again, the installer should check all panels match before installing.

### RECOMMENDED TOOLS:

Miter Saw and/or Table Saw  
Pencil  
Metal Square / Ruler  
Safety Glasses

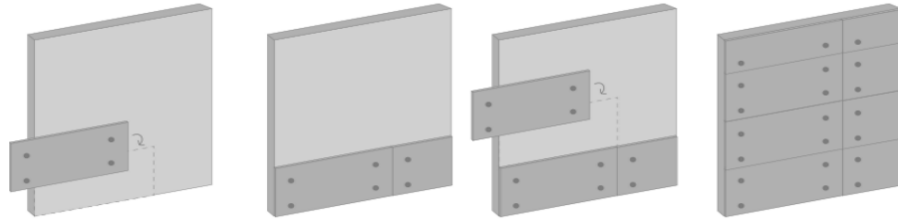
Drill  
Level  
Drywall Saw  
Earplugs

Measuring Tape  
10 oz. Caulking Gun  
Utility Knife  
Dust Mask



For more information, please visit our website or contact us:

[www.hourwall.com](http://www.hourwall.com) \* Toll Free at 1-877-477-4373 \* Email at [info@instoneproducts.ca](mailto:info@instoneproducts.ca)



**BEFORE YOU START:** URBANCONCRETE ½" Panels are designed to be either installed tight together (butt joint) or spaced apart with up to a 3/8" gap. Prior to beginning installation, place 2-4 panels together and determine the desired gap size.

**NOTE:** The larger the gap between intersecting panels, the more filling that needs to be done with color-matched caulking.

**1. MEASURE and MARK:** Products should be measured and marked on the 'concrete-finish' surface (face) of each panel. Using a measuring tape, mark with a pencil, and then use a straight edge to mark a cutting line.

**2. CUT:** The panels are easiest cut with the backside down. Use a hand saw or miter saw to make the cut. For cutting panels lengthwise, a table saw is recommended. To cut outlet and fixture holes, make markings on the backside of the panel, then use a drill and jigsaw (or drywall saw) to cut the opening. For precise cuts or trimming, a utility knife or drywall saw can be used.

**3. FASTEN:** Fasten product to drywall or wood substrate using 2" brad nails and/or drywall screws. Before installing, the wall should first be measured, and panels laid out. A level should be used to ensure each row is level. It is ideal to start from the left side as the ship lap is on the right side of the panels. Fit the first panel flush against the wall or starting point, and work to the right from there. The final piece will need to be cut to the necessary length. The top row will also need to be cut ('ripped') lengthwise to the necessary height, so the panel fits flush with the ceiling or top of the wall.

1. Drywall Screws (recommended) - apply screws roughly every 8", into the top and side shiplaps (the adjoining panel should cover and hide). If you plan to have a large (more than ¼") seam between panels, screws are not recommended as they may become visible). You may also need apply screws into the 4 face 'Circles' and/or larger pits on the panel or into some. In some cases where the top or side has been cut off, all screws must be applied directly into the face Circles or pits of the panels. Paintable caulking should be used to cover screw holes and can be painted with the matching URBANCONCRETE Paint Kit.
2. Brad Nails – apply nails every 8" into the top and side shiplaps, and in inconspicuous spots (existing indents, the 4 face 'Circles'). This is a faster installation method but may not have as strong a hold. Adhesive can be used in conjunction with brad nails.
3. Adhesive – Adhesive can be used on its own, or with brad nails. We recommend a polyurethane friendly heavy-duty construction adhesive like Titebond TiteGrab or Gorilla Glue. All surface areas must be clean, dry, and free of oily and loose materials. It is recommended to scuff or roughen the back of the panels prior to application. A file, rasp, or sandpaper can be used for this.
4. Double-sided Tape – for a more temporary install, double-sided (two-sided) tape can be used. Simply apply one strip at the top, one to two in the middle, and one at the bottom for the entire length of the panel. Then peel off the tape film from both to place onto the wall.

### APPLICATION OVER CONCRETE/BRICK

URBANCONCRETE can be applied over concrete or brick according to the standard instructions above, with a couple of modifications. If using only adhesive (recommended), you can follow the instructions above exactly.

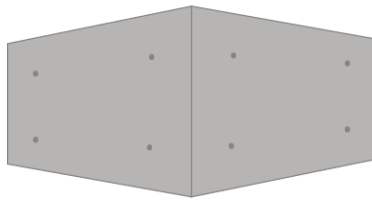
If using screws, a pilot hole can be drilled into the concrete with a masonry bit, and a masonry screw should be used to fasten the product. In some cases, a wood or masonry screw can be applied directly into the concrete without pre-drilling a pilot hole.

For more information, please visit our website or contact us:

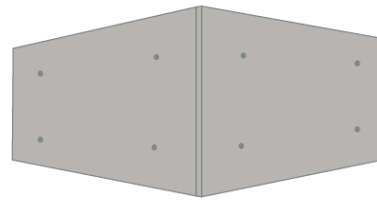
[www.hourwall.com](http://www.hourwall.com) \* Toll Free at 1-877-477-4373 \* Email at [info@instoneproducts.ca](mailto:info@instoneproducts.ca)

**OUTSIDE CORNERS**

An outside 90 degree mitered corner.



An outside 90 degree butt corner.



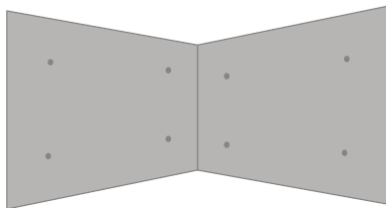
**BUTT CORNER (right drawing)** - the panels can simply be butt together to create a finished corner. Try to start from the corner using a 'factory-finished' edge. If any cut edges are exposed, the coordinating URBANCONCRETE Paint Kit should be used to color the ends.



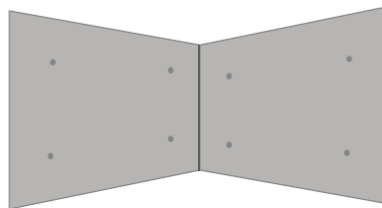
**MITER (left drawing)** - the panels can be mitered to create a more finished/continuous look. Cut the panel at a 45-degree angle, then use the same piece to continue the return. If there is a gap, tighten screws or nails and fill unwanted gaps with the appropriate paintable caulking and URBANCONCRETE Paint Kit.

**INSIDE CORNERS**

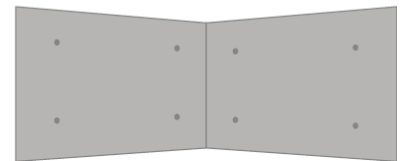
An inside 90 degree mitered corner.



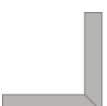
An inside 90 degree butt corner.



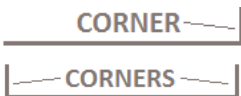
An inside 130 degree mitered corner.



**BUTT CORNER (right drawing)**. Butt two panels together at the inside corner. If there are any unwanted gaps, the paintable caulking and URBANCONCRETE Paint Kit can be used.



**MITER (left drawing)** - the panels can be mitered to create a more finished/continuous look. Cut the panel at a 45-degree angle, then use the same piece to continue the return. If there is a gap, tighten screws or nails and fill unwanted gaps with the paintable caulking and URBANCONCRETE Paint Kit.



**IF wall has ONE corner** = it is better to begin at a corner to ensure a cut is not made through the face circles.

**IF wall has a corner on BOTH ends** = start installation on the most visible corner.

**ELECTRICAL SWITCHES & PLUGS**

To cut outlet and fixture holes, make markings on the backside of the panel, then use a drill and jig-saw (or drywall saw) to cut the opening. For precise cuts or trimming, a utility knife or drywall saw can be used

**INSET** - leave the cover plate on, and simply butt the panels to the edges of the cover plate for a clean look.

**FLUSH MOUNT** – (first make sure the electricity is turned off). Pull the electrical box about 3/4" and make sure it's secure. An electrical extension box may be used to extend the electrical outlet to be flush with panels (3/4"). Ensuring a tight fit, install the panel(s) around the box and reinstall the cover plate on the face of the panel(s).

**EXPANSION AND CONTRACTION:** Polyurethane panels will have minimal expansion and contraction. However, it is recommended to install your Hourwall panels when they are cool (contracted state) and as tight as possible to minimize the visual appearance of expansion and contraction. Paintable caulking and URBANCONCRETE Paint Kit can be used to fill in any unwanted gaps for a seamless finish.

**MAINTENANCE:** Dirt and scum can be washed off the product surface with water and a non-scuffing cloth or sponge. Mild, non-abrasive household cleaners or soap can be used carefully with water clean stubborn materials or stains. If any finish is compromised, use the Paintable caulking and URBANCONCRETE Paint Kit to re-finish.

For more information, please visit our website or contact us:

[www.hourwall.com](http://www.hourwall.com) \* Toll Free at 1-877-477-4373 \* Email at [info@instoneproducts.ca](mailto:info@instoneproducts.ca)